



McDonald County Commission

Keith Lindquist, Presiding Commissioner

417-223-2842

Kimberly Bell, County Clerk
PO Box 665, Pineville, MO 64856

417-223-7530 Fax 417-223-7519

mcdonald@sos.mo.gov
commission@olemac.net

John Bunch
Eastern Commissioner

David Holloway
Western Commissioner

07-10-2015

PUBLIC NOTICE

This is to advise that the first bridge off of Sutter Hollow Rd & Buffalo Creek Rd has been **CLOSED** indefinitely due to July 2015 Flooding. Near the following location:

Section: 27 Township: 23 Range: 34

This is to advise that no resident will be able to travel through this bridge until further notice.

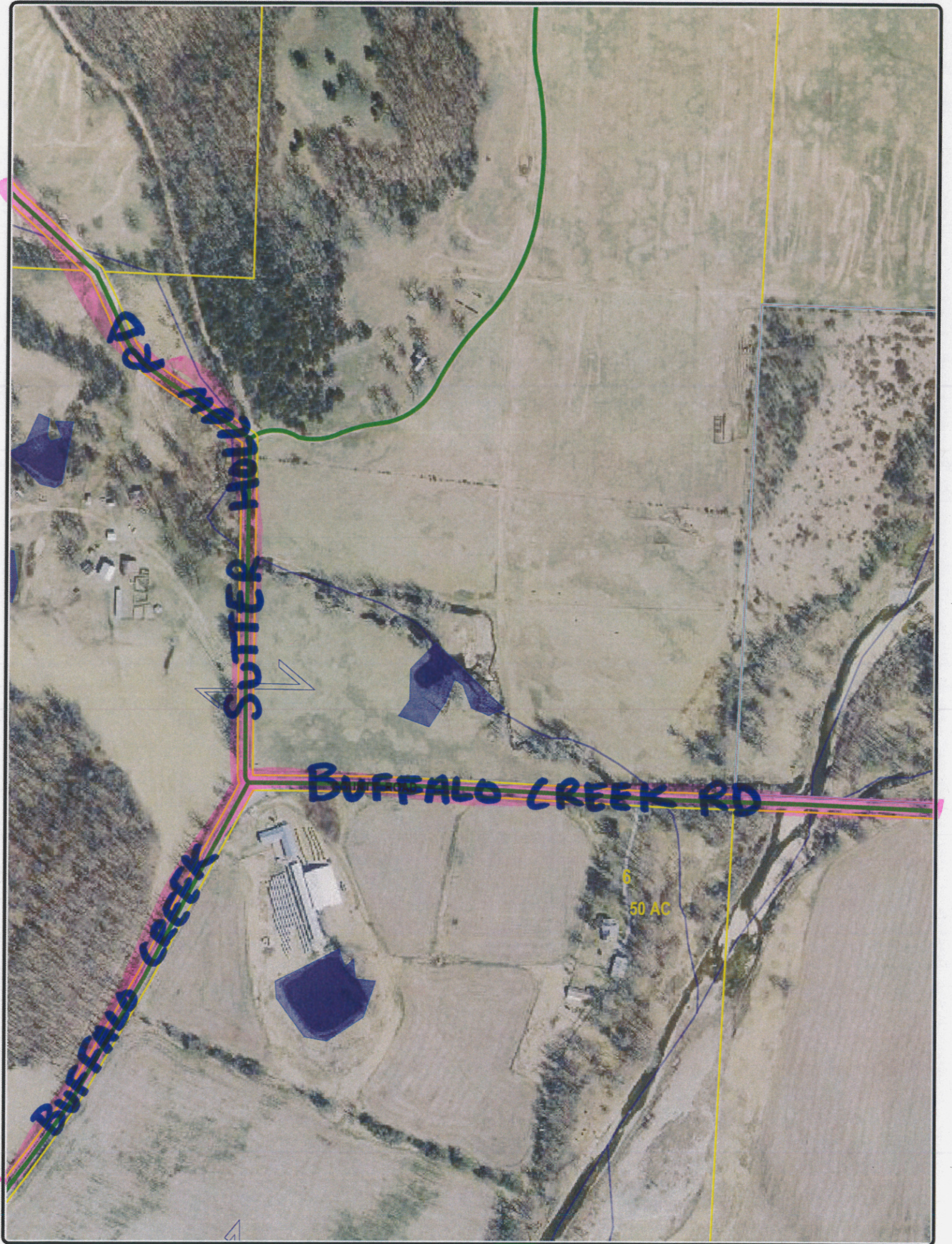
The McDonald County Commission meets on Mondays & Wednesdays from 9:00am to 3:00pm in the Commission Room on the lower level of the County Courthouse in Pineville, McDonald County Missouri.



John Bunch
Eastern Commissioner

Keith Lindquist
Presiding Commissioner

David Holloway
Western Commissioner



SUTTER HOLLOW RD

BUFFALO CREEK RD

BUFFALO CREEK

50 AC